

## YB 系列精密压力表

### YB series precision pressure gauge

#### 用途说明 Application Description

精密压力表主要用来校验工业用普通压力表，也可在工艺现场精确测量对铜合金和合金结构钢等材质无腐蚀性、非结晶、非凝固介质的压力。

该仪表在标度线下设置有镜面环(A型B型)，在使用中读数更清晰精确。并带有调零装置(B型)

precision pressure gauge is mainly used for testing industrial nominal pressure gauge and for precision testing the pressure of all kinds of service medium which will neither corrode with copper alloys or steel alloys which is uncorrosible, uncrystallized and uncaky.

This gauge has a mirror ring under the scale(A type and B type) to read more clearly and more precision. And attached a zero adjusting setting(B type).

#### 结构原理 Structure

仪表由测压系统、传动机构、指示装置和外壳组成。测压弹性元件经特殊工艺处理，使其性能稳定可靠，与高精度的传动机构配套调试后，能确保精确的指示精度。

仪表的工作原理是：当被测介质的压力作用于弹性元件后，使其产生弹性变形一位移，经拉杆带动传动机构放大，由指示装置指示被测压力。

This gauge is made up of the measuring system, gear setting, pointing setting and the outer case. The flexibility parts is dealt with the special technics, which makes the operation reliable. With the use of the high precision gear setting, it can be assured the high pointing accuracy.

The principle of the precision pressure gauge: The pressure of the service medium acts on the flexibility parts and make it moved, with the help of the stick, magnified by the gear setting, and the pointer point it out on the dial.

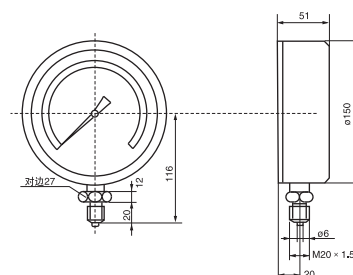
#### 主要技术指标 Main Technical Data

◇ 测量范围、精确度等级及特点 Scale range, accuracy class and features

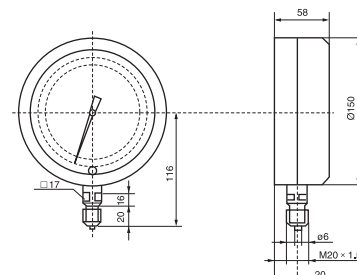
型号 Model	弹簧管材料 Bourdon tube	测量范围MPa Scale range	精确度等级 Accuracy class	结构特点 Structure character
YB-150A	锡磷青铜铬钒钢 Bronze chromium vanadium steel of tin phosphorus	0~0.1;0~0.16; 0~0.25;0~0.4; 0~0.6;0~1;0~1.6;	0.4	镜面 Dial face
YB-150B		0~2.5;0~4;0~6;0~10; 0~16;0~25;0~40;0~60;	0.25	镜面调零 Zero adjusting in the dial face

- ◇ 使用环境条件：5~40℃，相对湿度不大于80%，且环境震动和压力源的波动对仪表的精确读数无影响。
- ◇ 温度影响：使用环境温度如偏离20±3℃(A型)或20±2℃(B型)时，则须考虑温度附加误差0.4%/10℃。
- ◇ 重量：1kg(A型) 1.4kg(B型)
- ◇ Environmental condition:5℃~40℃，relative humidity is no more than 80%，and the undulate of the shock and pressure resource has no influence on precision readings of the gauge.
- ◇ Temperature effect: if environmental temperature deviates from 20±3℃(A type) or 20±2℃(B type),must consider additional error is about 0.4%/10℃.
- ◇ Weight:1kg(A type) 1.4kg (B type).

◇ YB-150A



◇ YB-150B



## YB-150B系列调零精密压力表

### YB-150B zero-setting precision pressure gauge

#### 产品概述 Product Overview

此类精密压力表主要用来校验工业用普通压力表，也可在工艺现场精确测量对铜合金和合金结构铜等材质无腐蚀性、非结晶、非凝固介质的压力。该仪表在标度线下设置有镜面环，在使用中读数更清晰精确。测压弹性元件经特殊工艺处理，性能稳定可靠，与高精度的传动机构配套调试后，能确保精确的指示精度。

仪表在用了一段时间后若发现有轻微的不回零的现象，请调节调零装置，使指针指向零位即可，不影响仪表的精度。

精度等级：0.25级，0.4级

测量范围：0~0.1~0~60MPa，-0.1~0~-0.1~2.4MPa

This type of pressure gauge is mainly applied to check industry-used common pressure gauge and also can precision measure the pressure of media that is non-corrosive to copper alloy and copper, noncrystalline and non-concretionary. A mirror circle is designed beneath the tick mark, which makes reading more precision and clear. After special fabrication processing, the elastic element can function sustainably and reliably and guarantee accuracy when attached to highly precision gear and adjusted.

If the gauge doesn't return to zero slightly after used for a period of time, please adjust the zero-setting and make the indicator return to zero while accuracy won't be affected.

Accuracy class: 0.25, 0.4

Scale range: 0~0.1~0~60MPa, -0.1~0~-0.1~2.4MPa



YB-150B

## YTNB-150系列耐震精密压力表

### YTNB-150ZT系列耐震轴向精密压力表

#### YTNB-150 shake resistance precision pressure gauge

#### YTNB-150ZT axial shake resistance precision pressure gauge

#### 产品概述 Product Overview

耐震精密压力表主要用来校验工业用普通压力表，也可用于精密测量对铜合金和钢等无腐蚀性、非结晶、非凝固的各种介质的压力及真空；广泛用于工业生产过程和精密测量及科学实验部门。

耐震精密压力表内部充灌阻尼液和配套缓冲装置，具有良好的耐震性能。仪表在用了一段时间后若发现有轻微的不回零的现象，请调节调零装置，使指针指向零位即可，不影响仪表的精度。

精度等级：0.4级

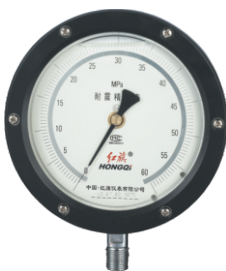
测量范围：0~0.1~0~60MPa，-0.1~0~-0.1~2.4MPa

Shake resistance precision pressure gauge is mainly applied to check industry-used common pressure gauge and also can precision measure the pressure of media that is non-corrosive to copper alloy and copper, noncrystalline and non-concretionary and vacuum pressure; it is widely used industry production process, precision measurement and scientific lab apartment.

Assorted buffer device and damping liquid which is filled inside the shake resistance precision pressure gauge contribute to good shake resistance. If the gauge doesn't return to zero slightly after used for a period of time, please adjust the zero-setting and make the indicator return to zero while accuracy won't be affected.

Accuracy degree: 0.4

Measuring range: 0~0.1~0~60MPa, -0.1~0~-0.1~2.4MPa



YTNB-150



YTNB-150ZT